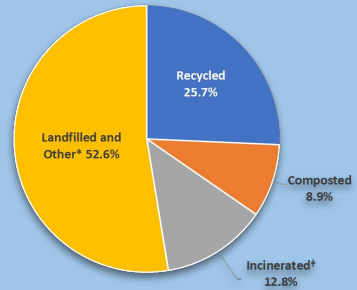




# WATCH YOUR WASTE!

Our current waste management systems are unsustainable and harmful to the environment. Poor waste management not only affects the environment but also marginalized communities vulnerable to climate change impacts. Some solutions include cyclical systems, ending fast fashion, and green infrastructure. We can measure the effect of these solutions by measuring carbon emissions, biodiversity loss, and soil and water pollution.



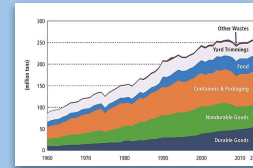
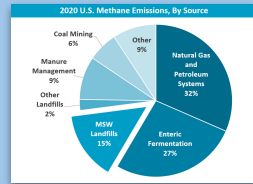
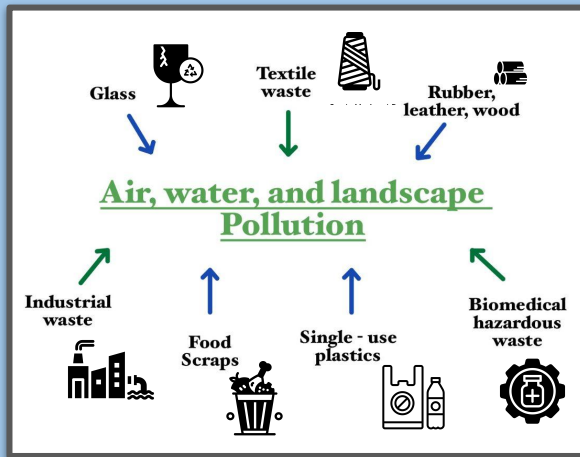
By the year 2050, by weight, there may be more plastic in the ocean than fish.



5.25 trillion pieces of plastic in our oceans

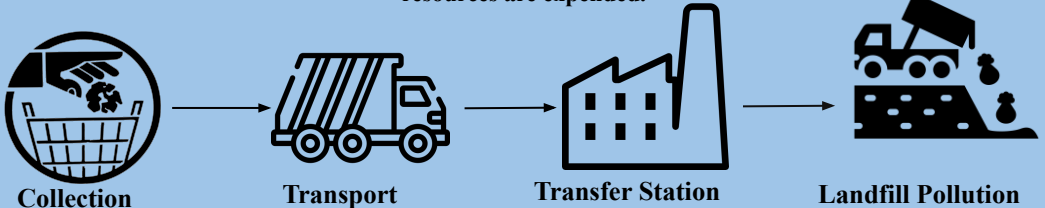
65.4 percent of trash created in the US are sent to landfills

Minority and low-income communities are disproportionately targeted and impacted by hazardous waste sites and landfills.



Waste produced in the US

Below is a simplified diagram of our current non-cyclical system meant to illustrate how much time, energy and resources are expended.



What can YOU do to mitigate our waste management issue?:

- Compost!

- Reduce single-use plastic consumption

- Buy second-hand clothes, toys, furniture etc...

- Replace disposable items with reusable alternatives

- Sign/start petitions for local restaurants, hotels and grocery stores to donate extra items

- Research the amounts and types of wastes your job/organization produces

- Contact your local municipal landfill facility

