



## Japanese Knotweed (*Fallopia Japonica*) in the US



Japanese Knotweed is an invasive species that was initially introduced as an ornamental garden plant, but has since spread across much of the the United States. It grows aggressively in dense stands that crowd out native species, creating pure monocultures. It reproduces through seeds and rhizomes, with dispersal occurring aquatically or by human transport.

### Why You Should Care

Japanese Knotweed greatly diminishes local plant biodiversity, which has ensuing effects on all members of the ecosystem, including humans. Knotweed makes riverbanks more susceptible to erosion, leading to lower watershed health and water quality.

### Ecological Impacts

Beyond crowding out native vegetation, Knotweed has negative effects on nutrient cycling due to its highly efficient usage of available Nitrogen and Carbon. This subsequently hurts the productivity of surrounding aquatic and soil ecosystems by limiting access to these essential nutrients.

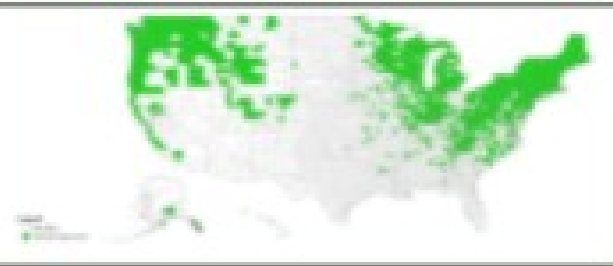
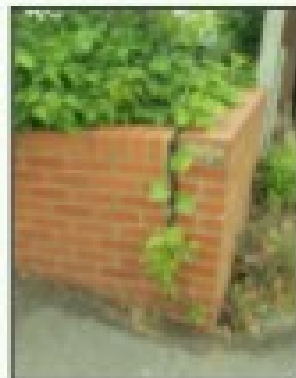


Figure 1: Japanese Knotweed range map in US

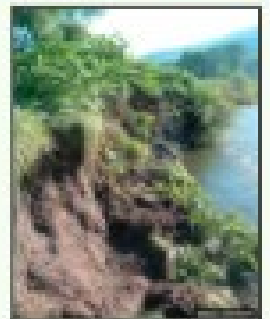
### Economic Impacts

Knotweeds root system causes substantial damage to paving and building foundations. Due to this, presence of Knotweed can instantly devalue a property by 10-15%.



### Social Impacts

Knotweed's overtaking of riverbanks restricts access to rivers for recreational activities such as swimming and fishing. Additionally ruins priva

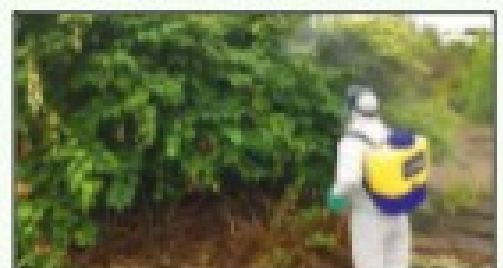


## Solutions

- There are multiple different treatment options available for areas infested with Japanese Knotweed. The three primary means of control are:
  1. Mechanical (cutting). Proper disposal after mechanical removal is crucial, as otherwise the discarded fragments can result in Knotweed spread.
  2. Chemical (herbicides). Glyphosate based herbicides work best.
  3. Biological (grazing) control
- Minimizing the frequency of human caused disturbance events, as this sets the stage for a Knotweed invasion.
- Replanting native species after removal is also necessary to stop Knotweed from reemerging.

## What Can You Do?

- Most mechanical removal is done by volunteers over the span of a few years.
- Can also use alternative ornamental plants rather than planting Knotweed
- Learn how to identify Knotweed in order to catch infestations before they are fully established.



### Uses for Knotweed

Japanese Knotweed can also be foraged. It has a similar taste to rhubarb and can be used as a substitute in recipes. Each part of the plant can be used (e.g. stems are great pickled and leaf tips are best sauteed).

