

FACTORY FARMING

WHY WE NEED AN ALTERNATIVE

An increase of factory farming has contributed to the increasing of greenhouse gases and global warming. We want to reduce factory farming by 20% and encourage support for sustainable and ethical farms instead.

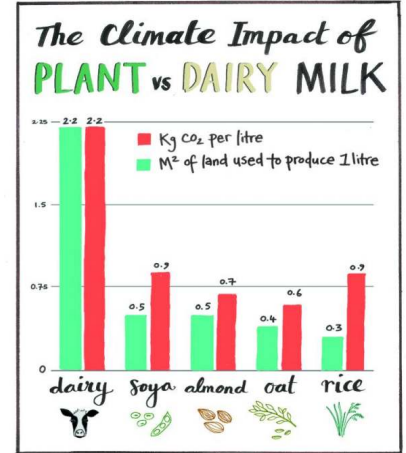
JUSTIFICATION

- Contaminated meat from antibiotics
- Small farms have less business
- Increased soil, air, and water pollution
- Horrible conditions and cruel treatment for animals

14.5% OF US HUMAN-CAUSED EMISSIONS ARE FROM FACTORY FARMING

37% METHANE

65% NITROUS OXIDE

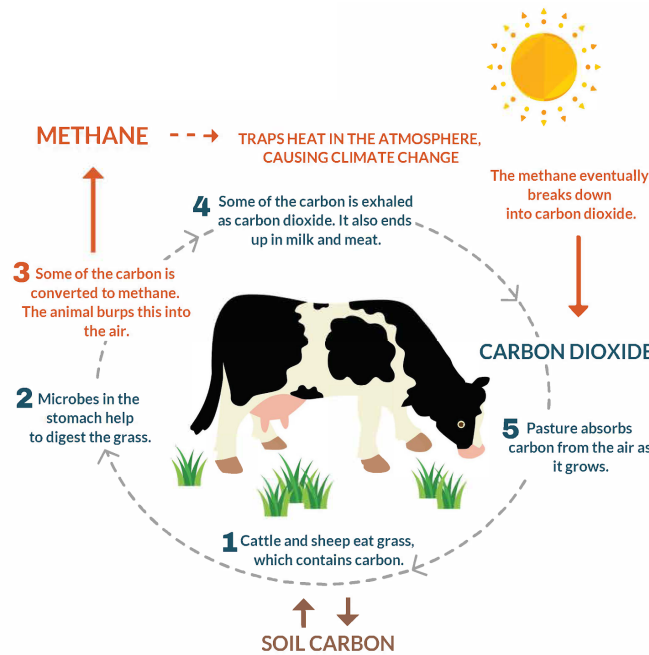


SCIENTIFIC PROCESSES

When methane and CO₂ are released into the atmosphere, more heat gets trapped. The contribution of gases from these farms is fueling the Greenhouse effect and adding to global warming. Excess fertilizer and animal waste also get into local water sources through runoff. The phosphorous in the soil then causes Eutrophication.

SYSTEMS APPROACH

Animals, consumers, food and soil, & land use all play a big role in animal farming & feed off of each other. Human consumers want more meat and animal products so farms need to raise more livestock in order to keep up with demands. Thus, more resources are needed to fulfill the consumer demands meaning that more land and food are required to feed the animals. With the livestock necessary to keep up with increasing consumer demands, regulation of gases and other by-products are not being kept up with.



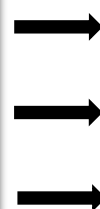
SCIENTIFIC DATA

- 173,000 miles of national waterways are impacted by agricultural runoff
- Animal farming accounts for 55% of soil erosion; 37% of nationwide pesticide usage; & more than 30% of the total nitrogen and phosphorus ends up in drinking water from runoff.
- Factory farming creates more emissions than US ships, planes, trucks, and cars combined.

SOCIAL: consumers are involved since their demand for animal products fuels the industry. **ECONOMICAL:** businesses such as grocery stores/markets rely on these products for income. **ECOLOGICAL:** water and atmosphere pollution caused by waste and gas emission by-products from livestock.

POSSIBLE SOLUTIONS & NEXT STEPS

- Change the diet of factory farmed livestock; farmers opt for cheaper options, which are the leading cause for extreme greenhouse gas amounts
- Farmers should be required to produce half of their feed on their own farms



- Contact local/state representatives to increase factory farm regulations
- Support local, sustainably farmed meat
- Reduce or eliminate meat from your diet