

# Planting Green

Lucas Criswell

Lewisburg, PA







My Dad was an early adopter of no-tilling corn in the mid 80s

Crops We Grow	Cover Crops We Have Used	
<ul style="list-style-type: none"><li>• Corn</li></ul>	<ul style="list-style-type: none"><li>• Rye</li></ul>	<ul style="list-style-type: none"><li>• Buckwheat</li></ul>
<ul style="list-style-type: none"><li>• Soybeans</li></ul>	<ul style="list-style-type: none"><li>• Triticale</li></ul>	<ul style="list-style-type: none"><li>• Sunflower</li></ul>
<ul style="list-style-type: none"><li>• Wheat</li></ul>	<ul style="list-style-type: none"><li>• Winter Pea</li></ul>	<ul style="list-style-type: none"><li>• Vetch</li></ul>
<ul style="list-style-type: none"><li>• Rye</li></ul>	<ul style="list-style-type: none"><li>• Rape</li></ul>	<ul style="list-style-type: none"><li>• Sorghum</li></ul>
<ul style="list-style-type: none"><li>• Yellow Peas</li></ul>	<ul style="list-style-type: none"><li>• Crimson</li></ul>	
<ul style="list-style-type: none"><li>• Pumpkins</li></ul>	<ul style="list-style-type: none"><li>• Radish</li></ul>	
<ul style="list-style-type: none"><li>• Sweet Corn</li></ul>	<ul style="list-style-type: none"><li>• Purple Top Turnip</li></ul>	



**Is this planting Green?**





**Maybe this?**





**OR this?**





Q: What will help fix this?

A field which is in a long term no-till field that has had small cover crop program.

A: Big covers!





A photograph of a rural landscape. In the foreground, there is a field of dry, brown grass and some dark, clumpy soil. A single, thin, dark vertical pole stands in the middle ground. The background shows a rolling hill under a pale sky. The text "So are we gaining?" is overlaid on the left side of the image.

**So are we gaining?**



**First step to  
planting Green,  
Plant it!**





Don't forget to hide the holes!





# **Rye, vetch mix Capturing sunlight**





**Early Spring**







**Winter kill cover mix.**

**Radish**

**Turnip**

**Oats**

**GONE, I won't do this  
again**

**Sunshine Spill!**



**Don't burn house down!**





**2013 Planted 500 Acres**







Miller  
Industrial

⚠ DANGER











## **Why do I roll rather than just plant**

**1. Uniform cover**

**2. Better flow**

**3. Puts cover on ground rather than melting away**





**What compaction?**







**NO insecticide**  
**What slugs?**









**Optrx sensor at  
side dress**





# What Optrx Sensors do for me

- Allow me to optimize my cover crop (not my nitrogen)
- Cut back on planting N and deliver N later in season
- Prove that cover cropping pays to cut back on N



**3<sup>rd</sup> week of August**  
**5.5" 1hr and half**





This is what I want to plan for









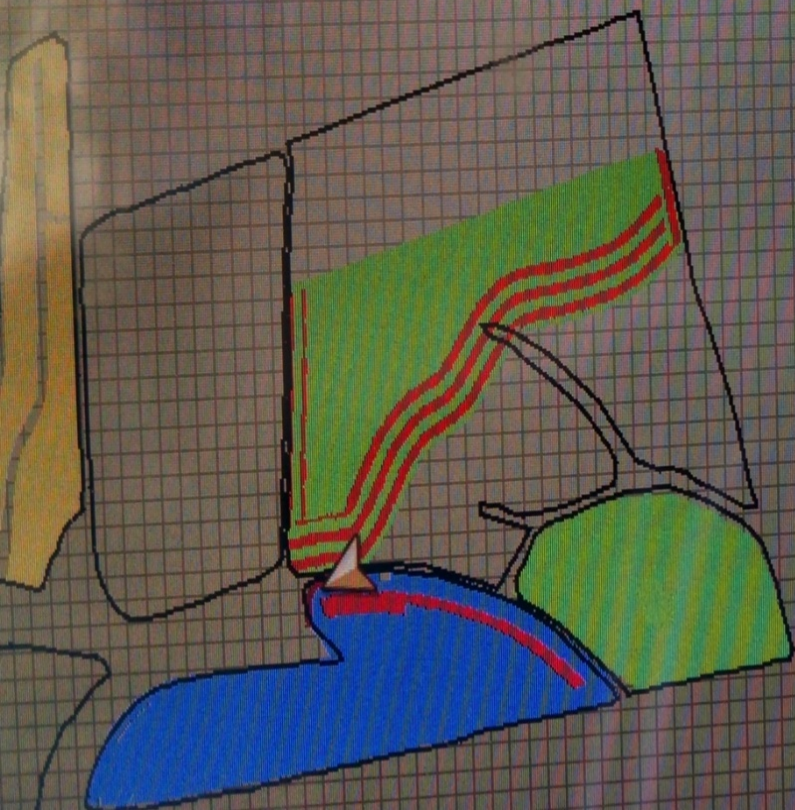




0.0 mph



Does it pay?



**Corn**

Yield (Avg)

**6299.0** bu/ac

Moisture (Avg)

**32.2** %

Area

**0.00** ac

Wet Weight

**210** lb

Dry Bushels



**3**





## Side by Side

- Rolled Rye: 204 bu
- Soybean stubble: 203 bu
- (untreated, untraited corn)

- Rolled Rye: 203 bu
- Soybean stubble: 202 bu
- (treated Acre max corn)

**Total applied N 140**



# My Planting Green Corn Program

- 1500 gal hog manure at green up ( no that's not a typo)
- 15 gal – nitrogen band      10 gal 30%      5 gal ATS out the back of planter 3 “ off side

## Herbicide

- Prefer 1 qt Gramoxone and 1 qt Bicep
- 2<sup>nd</sup> pass 22 oz Roundup ( which really wasn't needed now looking back)

## Side dress

- Run agleader optrx sensors to maximize nitrogen needs
- PSNT to double check Optrx



**So what about beans?**













**I call this habitat!**



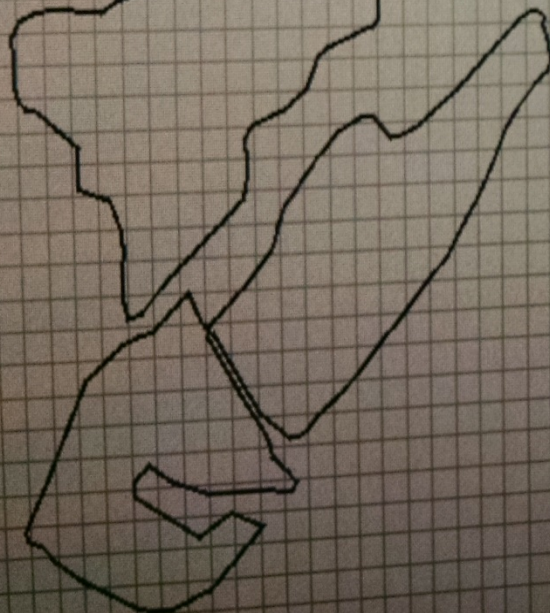
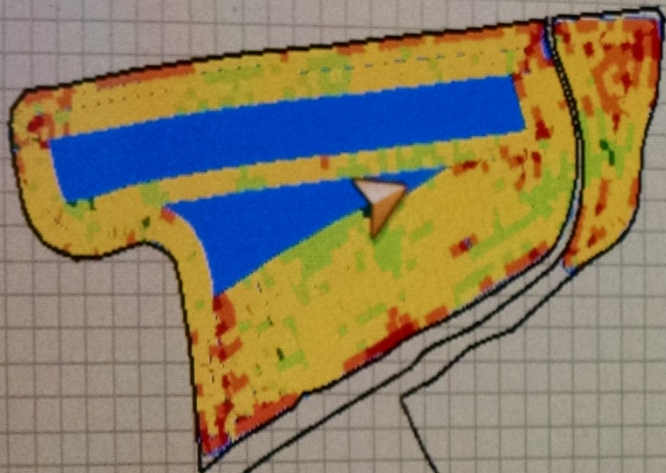


**Group 2.6 bean**





3.7 mph



### Soybeans

Yield

**80.2** bu/ac

Moisture

**13.2** %

Area

**15.11** ac

Wet Weight

**53768** lb

Dry Bushels



**896**



# Planting soybeans Green program

## Herbicide

- Pre 1oz Canopy EX and ½ pnt 2 4 D
  - At least week before.
- 
- Been planting untreated seed for two years now (they do survive)
  - Bite finger nails as neighbors will think you're crazy!
  - Wait to spray Roundup 25-30 days after emergence
  - Second week of August we sprayed for aphids.